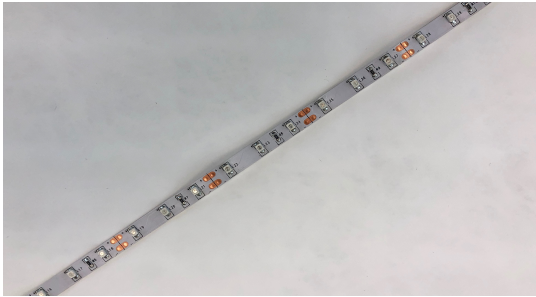




IR LED 5mm Strips (120 LEDs per M)



Brightness

N/A

Ease of use



Cost



Availability

Custom

Color Temp

N/A

Voltage

12V DC

Power

13W per M

Width

.20" Wide

Circuit

1.97" Length



What it is used for

Edge-lighting acrylic light panels for custom manufacturing purposes.



How to use it

LED strips can be provided on reels or in pre-measured & cut strips. LED strips need to be mounted to metal to act as a heat sink.



Specifications per application

Max length of LED strip	Maximum: 120"	Do not exceed from single connection point
Standard reel	16.4'	Can be cut in 1.97" sections
Heat sink requirements	5 sq. inches per watt	Minimum heat sink recommended to maximize the life of LEDs
Connectors	Solder-on	Custom connectors available
Light spectrum wavelength	850nm	Custom IR LEDs used for custom manufacturing purposes



Pros & Cons

Pros

- Uniform illumination
- Custom sizes and configurations available
- 3-year limited warranty

Cons

- Needs a heat sink
- More complex installation process