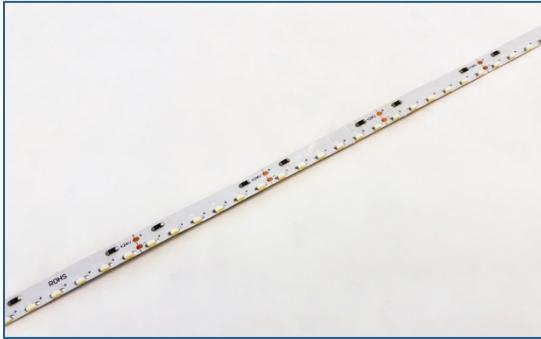




## LBT Side Fire LEDs – 24V 120 LEDs/M



Brightness	Ease of use	Cost
★★★★☆	★★★★☆	★★★★☆
Availability	Color Temp	Voltage
Stock	6500K	24V DC
Power	Width	Circuit
6W per Ft.	.31" Wide	1.97" Length



### What it is used for

Edge-lighting for ultra-thin acrylic light panels.



### How to use it

LED strips can be provided on reels or in pre-measured & cut strips. Installation should be completed on a metal surface that can act as a heat sink.



### Specifications per application

Max length of LED strip	Maximum: 96"	Do not exceed from single connection point
Standard reel	16.4'	Can be cut in 1.97" sections
Heat sink requirements	5 sq. inches per watt	Minimum heat sink recommended to maximize the life of LEDs
Light intensity & color temperature	600 lumens/ft. 6500K	Custom light intensity & color temperatures are available



### Pros & Cons

#### Pros

- Uniform illumination
- Easy installation
- Custom sizes and configurations available
- 3-year limited warranty
- Cut in 1.97" lengths

#### Cons

- Needs a heat sink
- Less bright