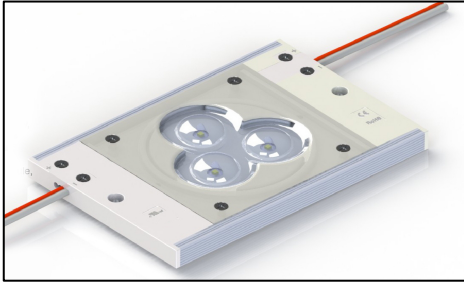


 **Tri-Optix™ LED Modules**



Brightness	Ease of use	Cost
★★★★☆	★★★★★	★★★★☆
Availability	Color Temp	Voltage
Stock	6500K	12V DC
Power	Width	Circuit
7W ea.	3.35" x 4.88"	Module

 **What it is used for**

Back-lighting displays and signs with a minimum depth of 4". Lights up to 2 sq. ft. per module.

 **How to use it**

TriOptix are individual modules designed for back lighting both signs and displays. Simple installation via mechanical means (such as screws) or double-back tape, and connect power (12V). Powerful LEDs can effectively light a square meter light box with only 4 modules. Best if placed on a white reflective surface. Add more modules to increase brightness.

 **Specifications per application**

Optic Lens	175° Beam Angle	Special beam angle produces even light
Pitch – spacing between modules	Varies	Standard pitch of 18" – use tighter pitch to achieve higher light output.
Minimum Distance – LED to Face/ Graphic	4" Standard	Decreased distance equates to decreased pitch – more modules needed
Standard Color	6500 K	Additional CCT can be produced depending on LED availability
Standard Lengths/Power	3.35" x 4.88"	7 watts per module

 **Pros & Cons**

Pros

- Uniform illumination
- Easy installation
- 700 Lumen output per module
- No heat sink needed
- 3-year limited warranty

Cons

- Only available in 12V DC
- Wire management