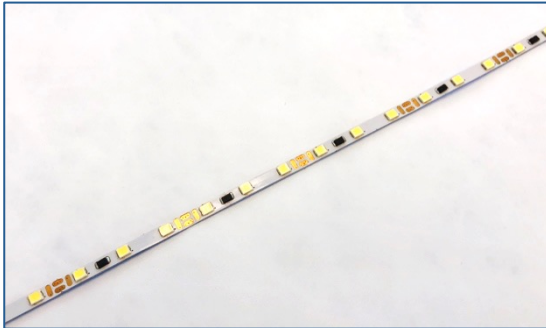




LBT LED 12V 4mm HO Strips



Brightness	Ease of use	Cost
★★★★★	★★★☆☆	★★★☆☆
Availability	Color Temp	Voltage
Stock	6500K	12V DC
Power	Width	Circuit
9.5W per Ft.	.16" Wide	1.47" Length



What it is used for

Edge-lighting display fixtures via light guide panels



How to use it

LED strips can be packaged on reels or provided in pre-measured & cut strips. LED strips need to be mounted to metal to act as a heat sink. These strips can be used with .157" thick acrylic.



Specifications per application

Max length of LED strip	Maximum: 39"	Do not exceed from single connection point
Standard reel	17.325'	Can be cut in 1.47" sections
Heat sink requirements	5 sq. inches per watt	Minimum heat sink recommended to maximize the life of LEDs
Light intensity & color temperature	900 lumens/ft. 6500K	Custom light intensity & color temperatures are available



Pros & Cons

Pros

- Uniform illumination
- Custom sizes and configurations available
- Light boxes as thin as about .5"
- Thinner sheets of acrylic lower weight for lower shipping costs (.157")
- 3-year limited warranty

Cons

- Needs a heat sink
- More complex installation process